

Visirite

Visirite is the perfect solution for constructing corporate, directional and exterior pylon signs. The strong 55x55mm aluminium extrusion is available in mill finish, clear natural anodised, black or white or alternatively you can powder coat to suit the corporate colours of your application. For permanent applications, set a section of Visirite mounting profile into concrete or use a Visirite hard surface mount. For a more temporary solution simply sleeve your Visirite sign over a star picket.



Advantages

- 1 System = 1000's of Solutions
- Easy handling & assembly
- No high cost equipment
- Low labour costs

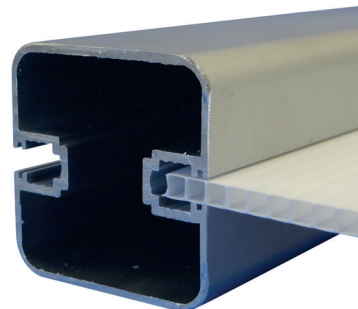
Applications

- Corporate signage
- Carpark directions
- Real estate signs
- Way find signs
- Balustrade
- Fencing



Corflute Sheet

Holds up to 6mm.



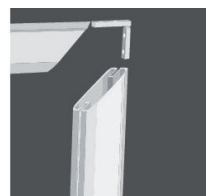
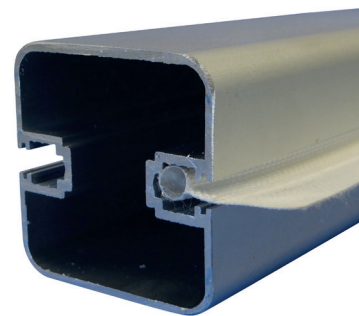
Aluminium Composite Panel

Holds up to 6mm.

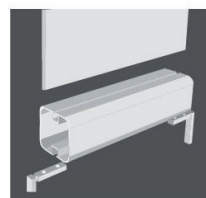


Banner Material

Takes Keder to hold the banner material.



On outside mitred joins, the connector slides into the outer slot. Grub screws tighten from outside.



Groove takes up to a 6mm panel. The panel sits into the groove 15mm.



The slot in the connector allows for it to slide up the extrusion to create a T Joint. All four grub screws must be tightened once in place. On this connector, grub screws tighten from the inside.

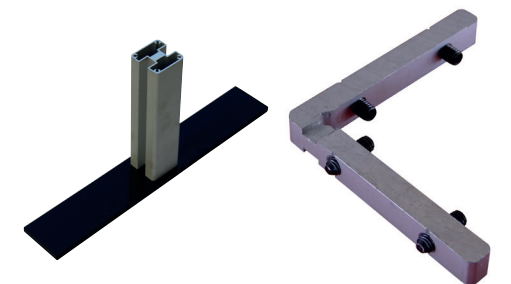
Visirite Café Barriers

Visirite offers an ideal solution for constructing stylish, lightweight and customizable café barriers. With the flexibility of using Kedar finished banners or rigid signs, Visirite is the answer for any colour or size barrier. For a quick and simple solution choose from one of our standard size café barriers below.



Set Includes

- Visirite Profile mitred top rail and side posts
- Visirite Mini Profile bottom rail
- Visirite Flat Foot x2
- Visirite Corner Stake x4
- Insert printed substrate of your choice



Visirite - Wallmount Signs

Visirite is the perfect solution for constructing permanent wallmount and building signage, large or small. Whether it is a fully framed sign or simply a Keder finished banner stretched out, the Visirite wallmount bracket will securely hold your sign in style.

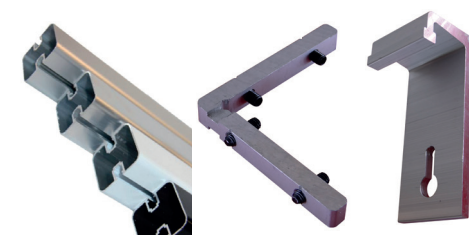
Applications

- Building signage
- Banner advertisement



Components Used

- Aluminium Profile
- Corner Stake
- Wallmount Bracket

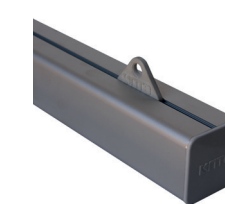


Visirite - Suspended Banners

Visirite is the perfect solution for suspending large vinyl banners with a Keder or rope-sewn edge. The strong profile will not bow over long lengths and your banner is secured by a mechanical fixing so it cannot break free. Enquire about mounting Visirite from stainless steel wires for a truly elegant display.

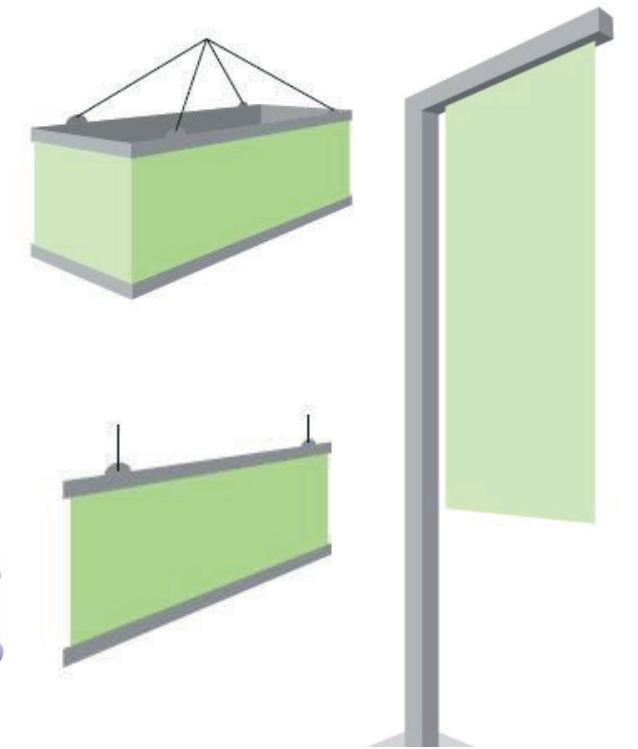
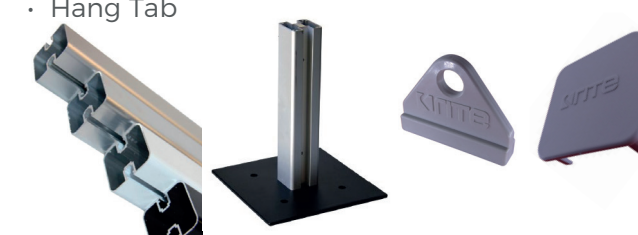
Applications

- Suspend banners using aluminium or mini profile
- Aisle/Department signage



Components Used

- Aluminium Profile
- Hard Surface Mount
- Plastic End Cap
- Hang Tab



Visirite - Side Mount Signs

Visirite is the perfect solution for mounting directional signage to buildings, poles and other structures. Simply attach a small section of Visirite mounting profile to your structure, slide the Visirite profile over the mounting profile and secure with a grub screw.

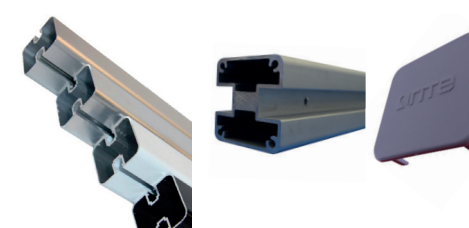
Applications

- Building signage
- Directional signage
- Pole signage



Components Used

- Aluminium Profile
- Mounting Profile
- Plastic End Cap



Visirite - Freestanding Signs

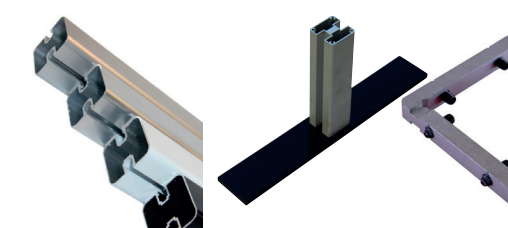
Visirite is the perfect solution for creating freestanding signs. The finished frame can either be permanently fixed by concreting the support profile or sleeved over a star picket or foot for a temporary solution.

Applications

- Building signage
- Real Estate signs
- Balustrade
- Corporate signage

Components Used

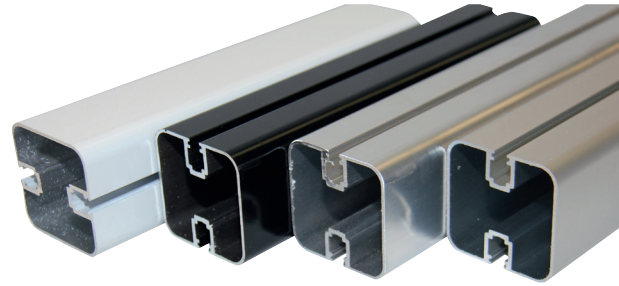
- Aluminium Profile
- Corner Stake
- Flat Foot



Visirite Aluminium Profile

Features and Benefits

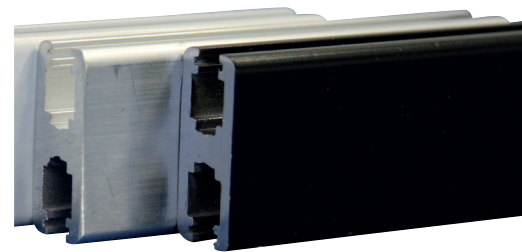
- Available in anodised, white and black powder coat and mill finish
- Heavy duty
- Excellent for long term applications
- Slides over star pickets
- End caps available



Visirite Mini Profile

Features and Benefits

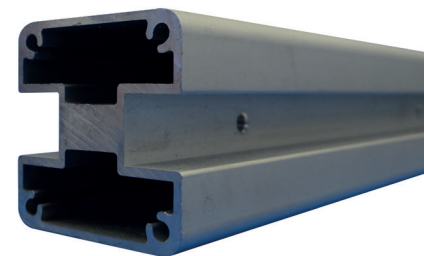
- Available in black powder coat and mill finish
- Use with standard Aluminium Visirite profile to create an appealing T Joint
- Fits Visirite corner stakes
- End caps available



Visirite Mounting Profile

Features and Benefits

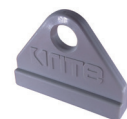
- Concrete into ground
- Mount to any surface with 10 gauge screws
- Visirite Profile sleeves over outside



Visirite Hang Tag

Features and Benefits

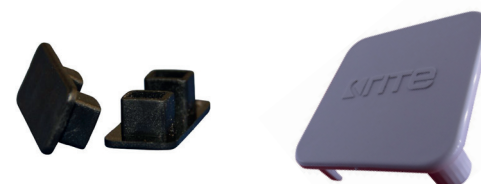
- For hanging banners
- Hole diameter - 10mm



Visirite Plastic End Cap

Features and Benefits

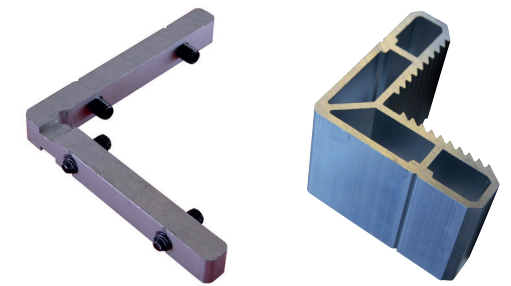
- Caps the ends of hanging banners and vertical sign posts



Visirite Corners

Features and Benefits

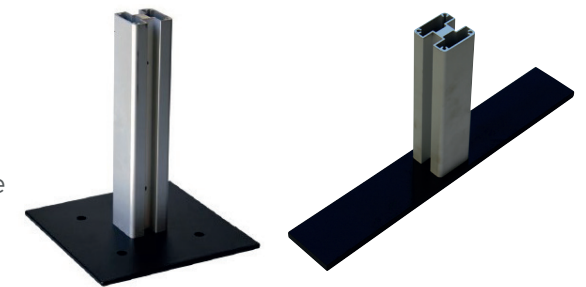
- Create mitred corners or T Junctions with corner stakes
- Create mitred corners with knock-in corners for extra rigidity



Visirite Bases

Features and Benefits

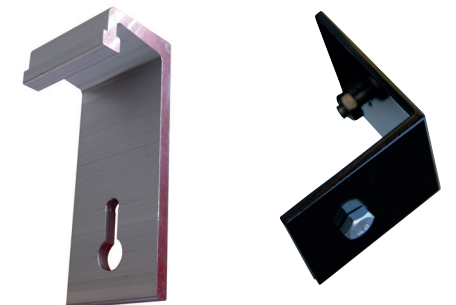
- Mount horizontally on walls for banners & other signs
- Mount vertically for signs freestanding on concrete
- Flat foot for free standing signs
- Mounting profile is 250mm H



Visirite Brackets

Features and Benefits

- Mount Visirite Profile on walls
- Connect Visirite Profiles in any configuration
- Bracket width - 50mm



Visirite Rubber Wedge

Features and Benefits

- Enables the mounting of 2mm and 3mm panels in Visirite profiles

